

NATIONAL VS REGIONAL

Medici Retz november 8

CAN YOU SEE THE DIFFERENCE
BETWEEN THOSE 2 EUROS ?



NATIONAL EURO

REGIONAL EURO

A PERDRE LA RAISON

TAHAR RAHIM NIELS ARESTRUP EMILIE DEQUENNE



BELGIAN MAJORITY

GLOBAL BUDGET : 6.080.000 €

BELGIUM / FRANCE / LUX / CH

BELGIAN PART : 2.747.000 (45 %)

CCA : 620.000 €

WALLIMAGE : 225.000 €

VAF : 112.500 €

TAX SHELTER : 1.250.000 €

RTBF : 70.000 €

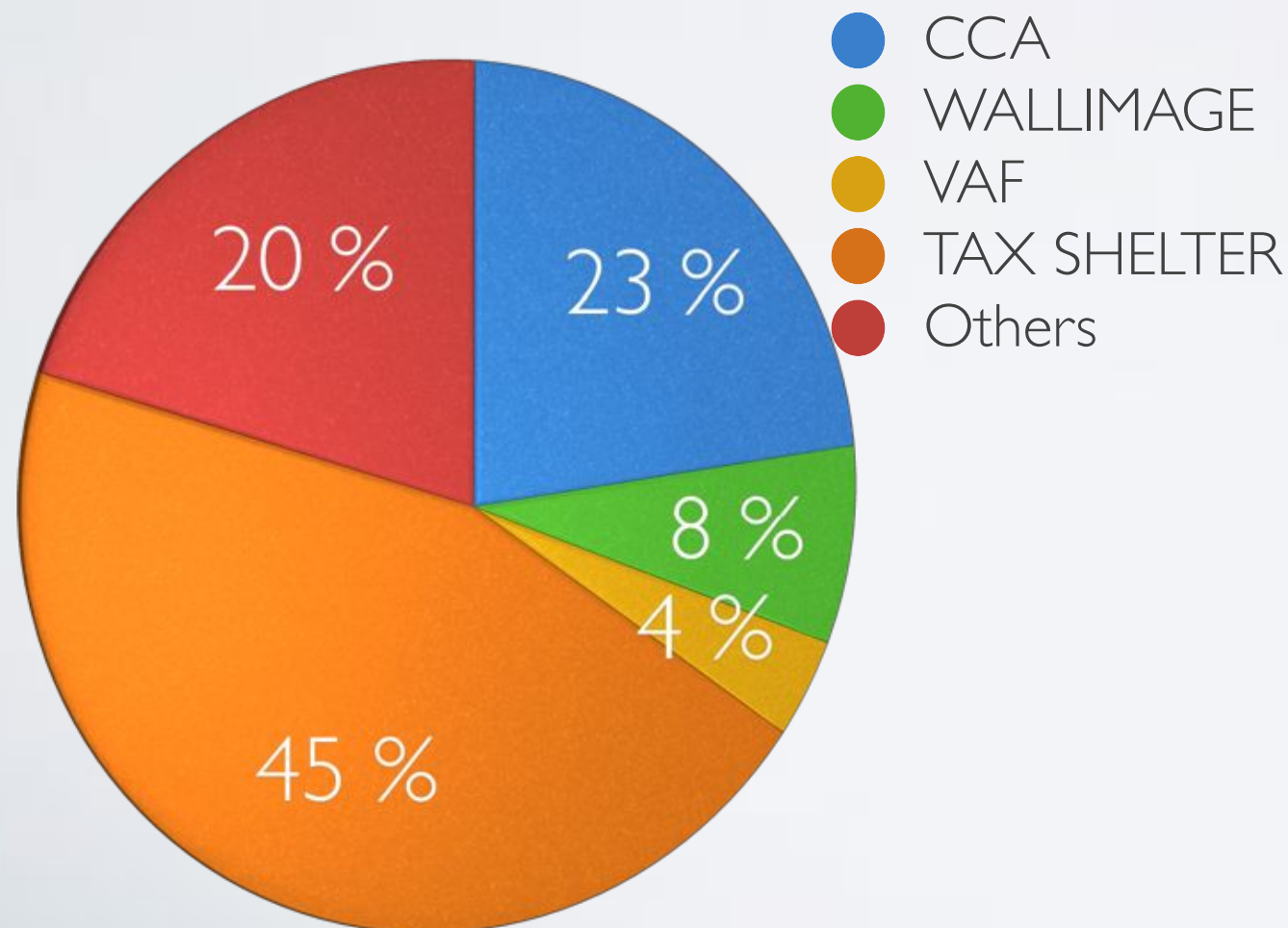
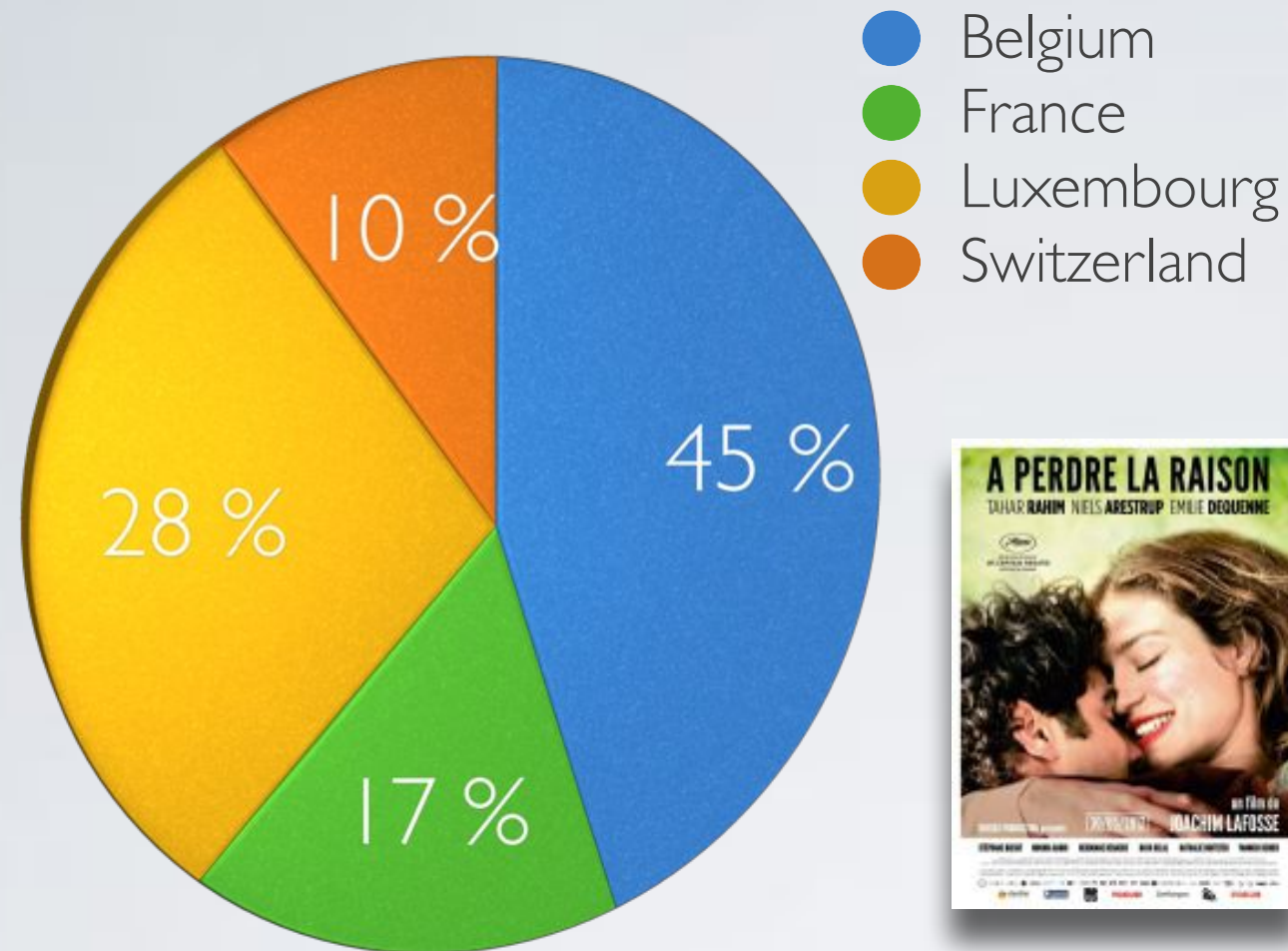
EURIMAGES : 271.000 €

BELGIAN MAJORITY

GLOBAL BUDGET : 6.080.000 €

BELGIUM / FRANCE / LUX / CH

BELGIAN PART : 2.747.000 (45 %)



CCA : 620.000 €

WALLIMAGE : 225.000 €

VAF : 112.500 €

TAX SHELTER : 1.250.000 €

RTBF : 70.000 €

EURIMAGES : 271.000 €



BELGIAN MINORITY

GLOBAL BUDGET : 15.550.000 €

BELGIUM / FRANCE

BELGIAN PART : 1.880.000 € (12 %)

CCA : 100.000 €

WALLIMAGE : 247.500 €

VAF : 100.000 €

TAX SHELTER : 800.000 €

RTBF : 100.000 €

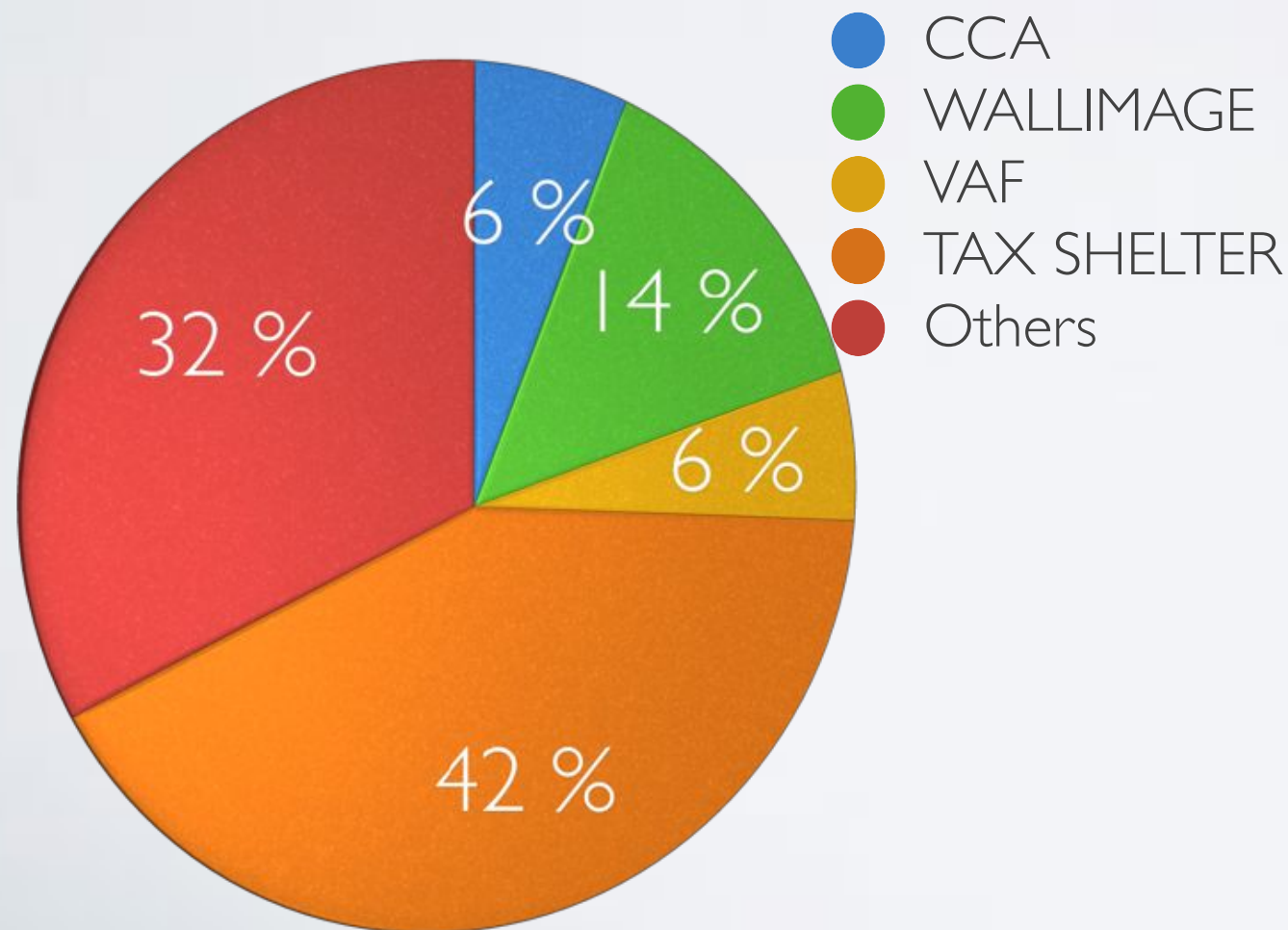
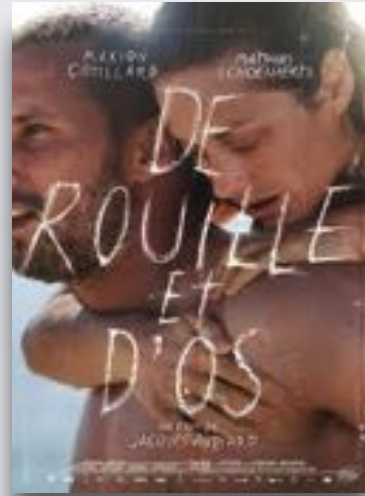
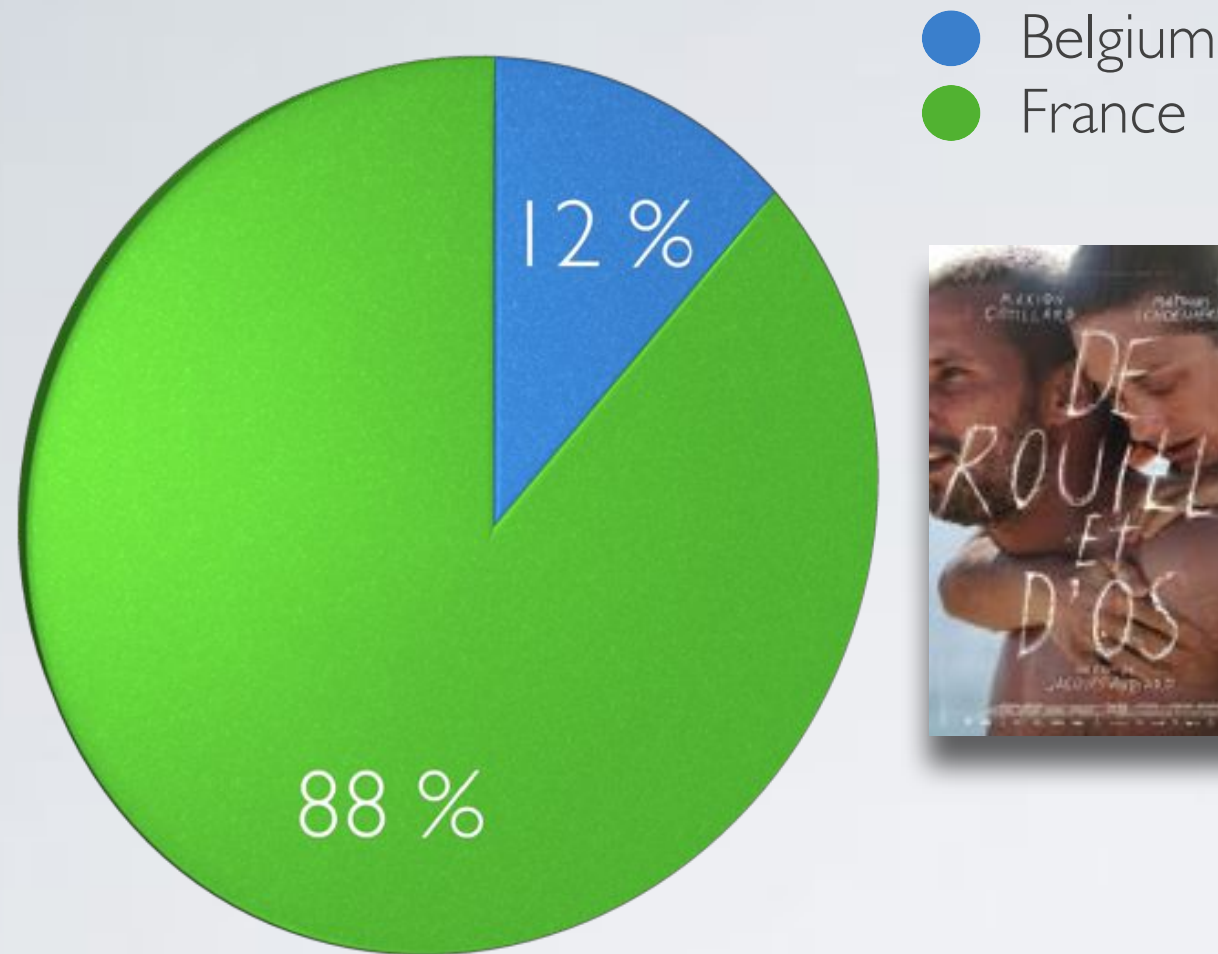
MG DISTR : 400.000 €

BELGIAN MINORITY

GLOBAL BUDGET : 15.550.000 €

BELGIUM / FRANCE

BELGIAN PART : 1.880.000 € (12 %)



CCA : 100.000 €

WALLIMAGE : 247.500 €

VAF : 100.000 €

TAX SHELTER : 800.000 €

RTBF : 100.000 €

MG DISTR : 400.000 €

IMPACT ON WALLONIA



285%



338%

